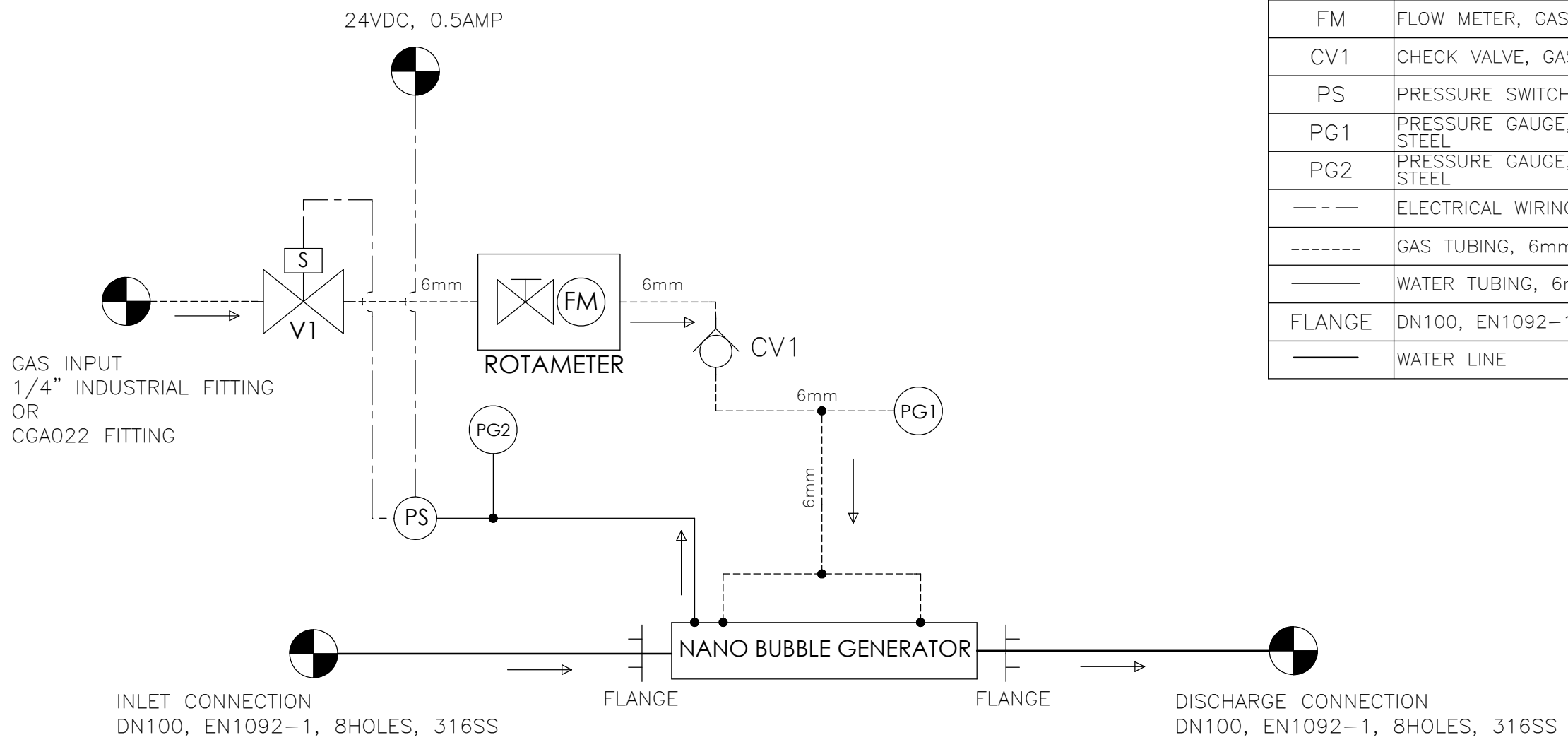


8 7 6 5 4 3 2 1

F E D C B A

SYMBOL	DESCRIPTION
V1	SOLENOID VALVE, GAS, 316SS
FM	FLOW METER, GAS, 240SCFH / 115SLPM
CV1	CHECK VALVE, GAS, 316SS
PS	PRESSURE SWITCH, WATER, @ 5 PSI/0.34BAR
PG1	PRESSURE GAUGE, GAS, 0-160PSI/0-12BAR, 300SERIES STAINLESS STEEL
PG2	PRESSURE GAUGE, WATER, 0-60PSI/0-4BAR, 300SERIES STAINLESS STEEL
----	ELECTRICAL WIRING, REF. ELECTRICAL SCHEMATIC
-----	GAS TUBING, 6mm, PTFE
————	WATER TUBING, 6mm, PTFE
FLANGE	DN100, EN1092-1, 8HOLES, 316SS
———	WATER LINE



- NOTES:
- SEE MANUAL FOR GAS SUPPLY PRESSURE ADJUSTMENT INSTRUCTIONS
 - WATER TEMPERATURE 40°F-140°F (4°C- 60°C)

REV.	BY	DESCRIPTION	ECO	DATE	CHECKED	APPROVED
A	MC	INITIAL RELEASE	2047	11/09/23	PM	PM

REVISIONS

PROPRIETARY AND CONFIDENTIAL:
 INFORMATION CONTAINED IN THIS DRAWING IS THE SOLE PROPERTY OF "MOLEAER INC". ANY REPRODUCTION IN PART OR WHOLE WITHOUT THE WRITTEN PERMISSION OF "MOLEAER INC" IS PROHIBITED.

DRAWN BY M.CHA	DATE 11/09/23
CHECKED BY P.MAHMOUDIAN	DATE 11/16/23
APPROVED BY P.MAHMOUDIAN	DATE 11/16/23

MOLEAER 3232 W. EL SEGUNDO BLVD
HAWTHORNE CA, 90250

DRAWING TITLE:
NBG 3, 316SS, METRIC, P&ID

DRAWING NO:
50F0-300

SIZE: B SCALE: 1:1 SHEET: 1/1 REV: A

DIMENSIONS IN INCHES [mm].
 ALL DIMENSIONS ARE ±.250 [±6.35]
 UNLESS OTHERWISE SPECIFIED

8 7 6 5 4 3 2 1

A

A