

8 7 6 5 4 3 2 1

F F

E E

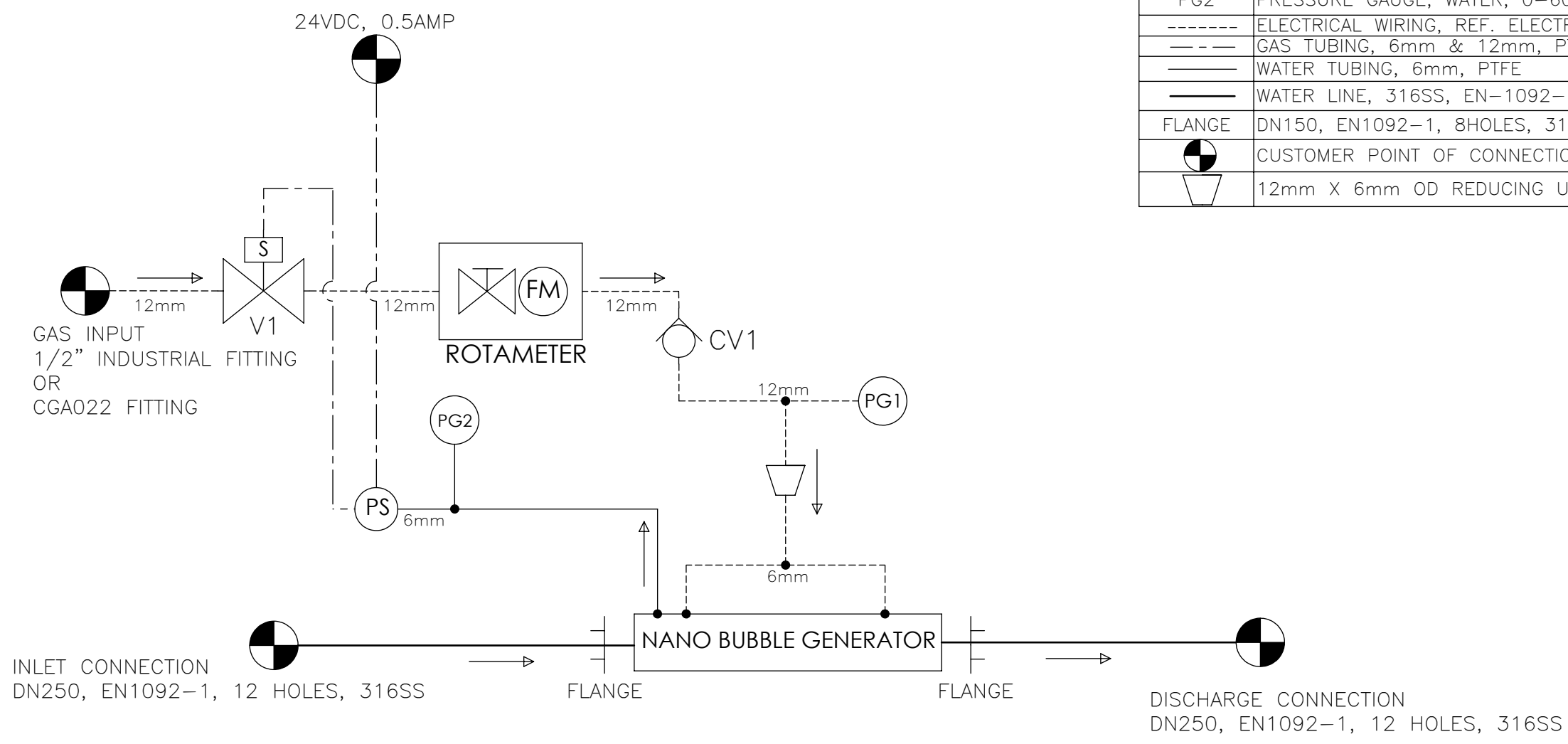
D D

C C

B B

A A

SYMBOL	DESCRIPTION
V1	SOLENOID VALVE, GAS, 316SS
FM	FLOW METER, GAS, 480SCFH / 227SLPM
CV1	CHECK VALVE, GAS, 316SS
PS	PRESSURE SWITCH, WATER, @ 5 PSI/0.34BAR
PG1	PRESSURE GAUGE, GAS, 0-160PSI/0-12BAR, 300SERIES STAINLESS STEEL
PG2	PRESSURE GAUGE, WATER, 0-60PSI/0-4BAR, 300SERIES STAINLESS STEEL
-----	ELECTRICAL WIRING, REF. ELECTRICAL SCHEMATIC
----	GAS TUBING, 6mm & 12mm, PTFE
---	WATER TUBING, 6mm, PTFE
—	WATER LINE, 316SS, EN-1092-1 PIPE
FLANGE	DN150, EN1092-1, 8HOLES, 316SS
	CUSTOMER POINT OF CONNECTION
	12mm X 6mm OD REDUCING UNION



- NOTES:
- SEE MANUAL FOR GAS SUPPLY PRESSURE ADJUSTMENT INSTRUCTIONS
 - WATER TEMPERATURE 40°F-140°F (4°C- 60°C)

UNLESS OTHERWISE SPECIFIED: DIMENSIONS IN INCHES[mm] TOLERANCES ARE ±0.250[±6.35]	DRAWN BY E.CRUIZ	DATE 10/30/23	3232 W. EL SEGUNDO BLVD HAWTHORNE CA, 90250 DRAWING TITLE: NGB 8, 316SS, METRIC, P&ID DRAWING NO: 50F0-008
	CHECKED BY M.CHA	DATE 12/01/23	
	APPROVED BY P.MAHMOUDIAN	DATE 12/04/23	
PROPRIETARY AND CONFIDENTIAL INFORMATION CONTAINED IN THIS DRAWING IS THE SOLE PROPERTY OF "MOLEAER INC". ANY REPRODUCTION IN PART OR WHOLE WITHOUT THE WRITTEN PERMISSION OF "MOLEAER INC" IS PROHIBITED.			SIZE: B SCALE: 1:1 SHEET: 1/1 REV: A

REV.	BY	DESCRIPTION	ECO	DATE	CHECKED	APPROVED
A	EC	INITIAL RELEASE	2044	10/30/23	MC	PM
REVISIONS						

8 7 6 5 4 3 2 1