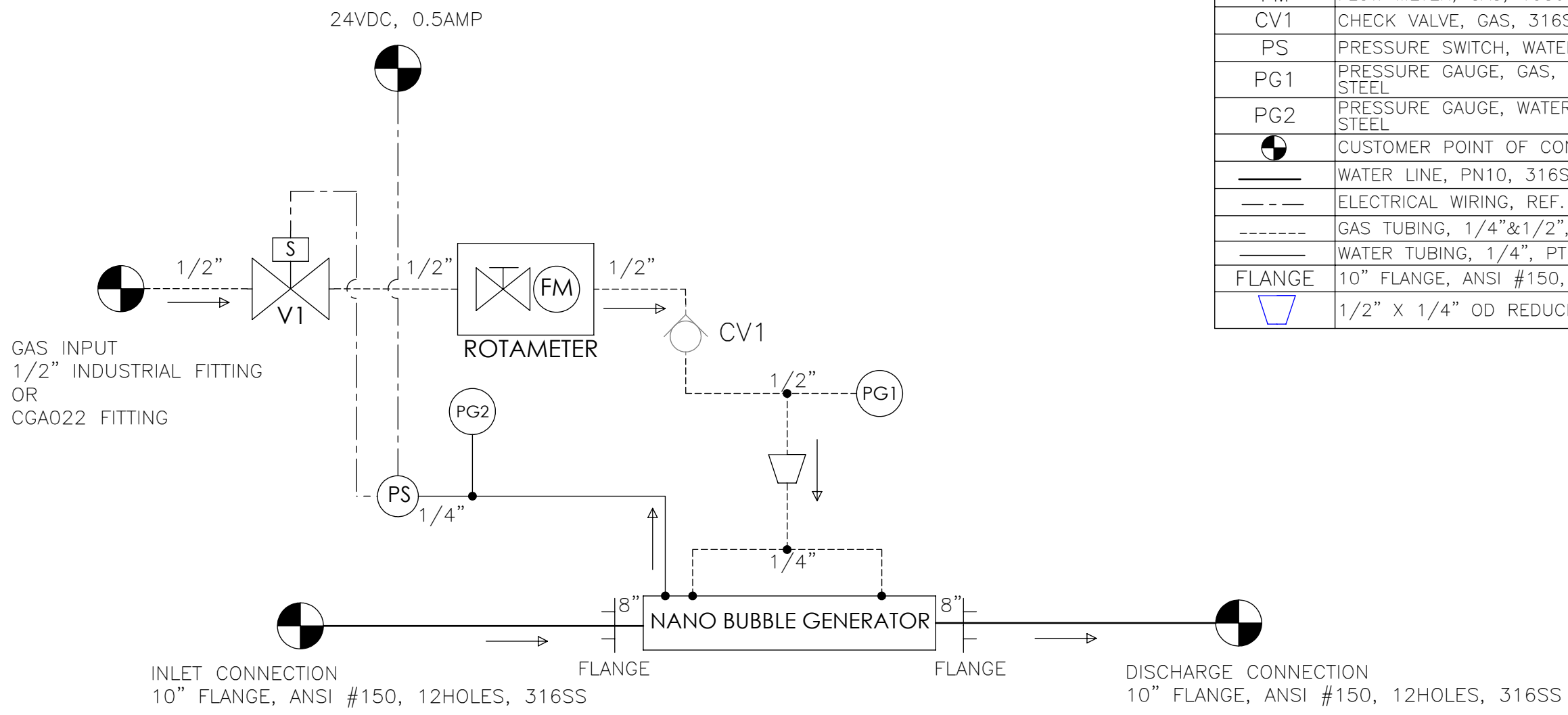


8 7 6 5 4 3 2 1

F E D C B A

SYMBOL	DESCRIPTION
V1	SOLENOID VALVE, GAS, 316SS
FM	FLOW METER, GAS, 1380SCFH / 651SLPM
CV1	CHECK VALVE, GAS, 316SS
PS	PRESSURE SWITCH, WATER, @ 5 PSI/0.34BAR
PG1	PRESSURE GAUGE, GAS, 0-160PSI/0-12BAR, 300SERIES STAINLESS STEEL
PG2	PRESSURE GAUGE, WATER, 0-60PSI/0-4BAR, 300SERIES STAINLESS STEEL
	CUSTOMER POINT OF CONNECTION
	WATER LINE, PN10, 316SS
	ELECTRICAL WIRING, REF. ELECTRICAL SCHEMATIC
	GAS TUBING, 1/4" & 1/2", PTFE
	WATER TUBING, 1/4", PTFE
FLANGE	10" FLANGE, ANSI #150, 12HOLES, 316SS
	1/2" X 1/4" OD REDUCING UNION



- NOTES:
1. ALLOW 3FT (1METER) EASEMENT AROUND THE EQUIPMENT
  2. SEE MANUAL FOR GAS SUPPLY PRESSURE ADJUSTMENT INSTRUCTIONS
  3. WATER TEMPERATURE 40°F-140°F (4°C- 60°C)

REV.	BY	DESCRIPTION	ECO	DATE	CHECKED	APPROVED
A	EC	INITIAL RELEASE	2023	10/30/23	MC	PM

REVISIONS

PROPRIETARY AND CONFIDENTIAL:  
 INFORMATION CONTAINED IN THIS DRAWING IS THE SOLE PROPERTY OF "MOLEAER INC". ANY REPRODUCTION IN PART OR WHOLE WITHOUT THE WRITTEN PERMISSION OF "MOLEAER INC" IS PROHIBITED.

DRAWN BY E.CRUIZ	DATE 10/30/23	3232 W. EL SEGUNDO BLVD HAWTHORNE CA, 90250 DRAWING TITLE: <b>NBG 8, 316SS, IMPERIAL, P&amp;ID</b> DRAWING NO: <b>50F1-607</b>
CHECKED BY M.CHA	DATE 12/01/23	
APPROVED BY P.MAHMOUDIAN	DATE 12/04/23	
DIMENSIONS IN INCHES [mm]. ALL DIMENSIONS ARE ±.250 [±6.35] UNLESS OTHERWISE SPECIFIED		SIZE: B SCALE: 1:1 SHEET: 1/1 REV: A

8 7 6 5 4 3 2 1