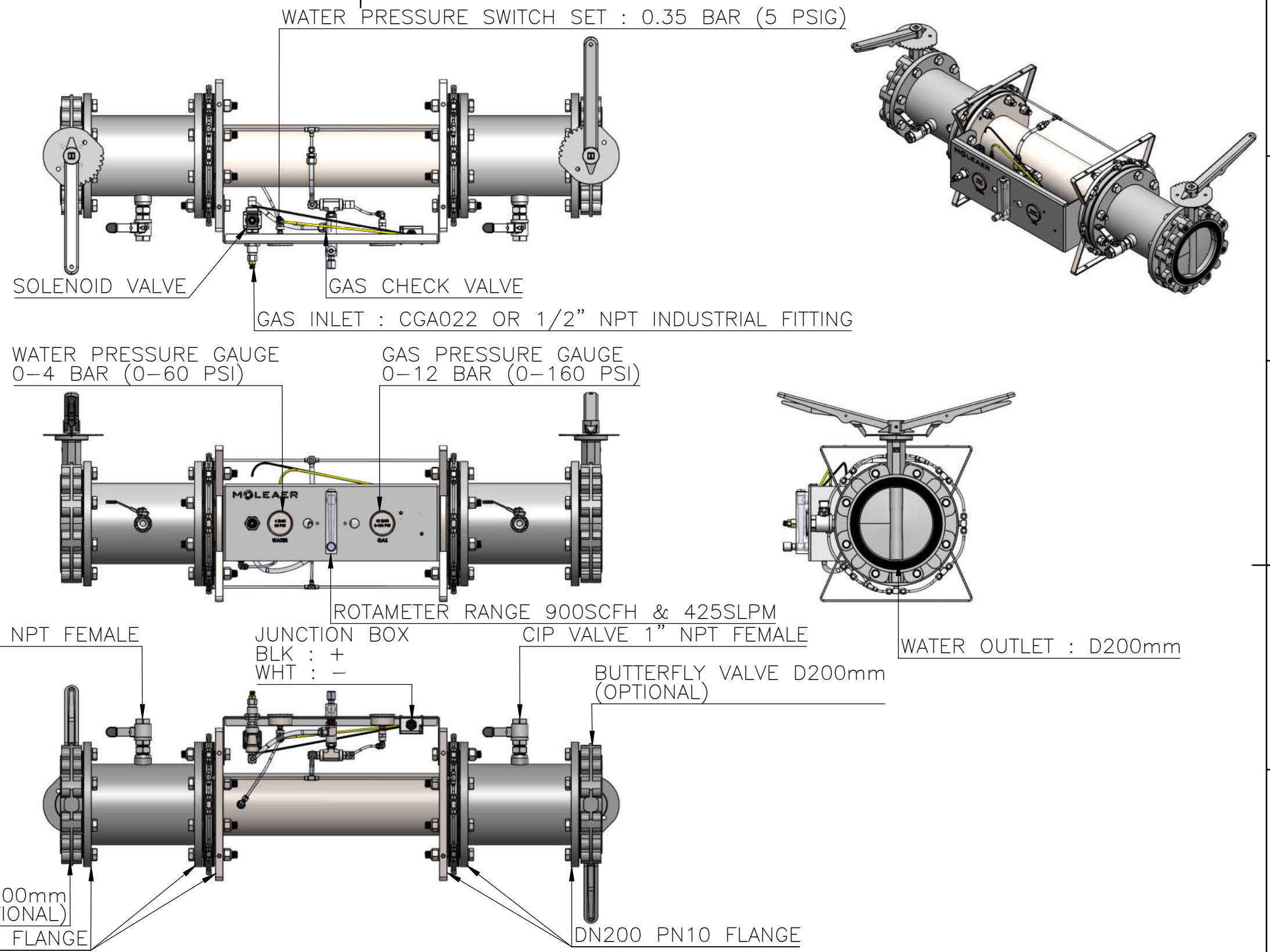


MATERIAL LIST	
MAIN COMPONENTS	MATERIAL
PIPES	316SS
GAUGE	300 SERIES STAINLESS STEEL
GAS TUBING	PTFE
SOLENOID VALVE	316SS
BUTTERFLY VALVE	316SS, VITON
CIP VALVE	316SS, PTFE



UNLESS OTHERWISE SPECIFIED:	DRAWN BY M.CHA	DATE 09/07/23
DIMENSIONS IN mm[INCHES]	CHECKED BY P.MAHMOUDIAN	DATE 09/12/23
TOLERANCES ARE ±6.35[±0.250]	APPROVED BY P.MAHMOUDIAN	DATE 09/12/23
<b>PROPRIETARY AND CONFIDENTIAL</b> INFORMATION CONTAINED IN THIS DRAWING IS THE SOLE PROPERTY OF "MOLEAER INC". ANY REPRODUCTION IN PART OR WHOLE WITHOUT THE WRITTEN PERMISSION OF "MOLEAER INC" IS PROHIBITED.		

**MOLEAER**  
ADVANCING PHARMACEUTICAL TECHNOLOGY  
 3232 W. EL SEGUNDO BLVD  
 HAWTHORNE CA, 90250

DRAWING TITLE:  
**TRINITY L4, 316SS, METRIC, GAD**

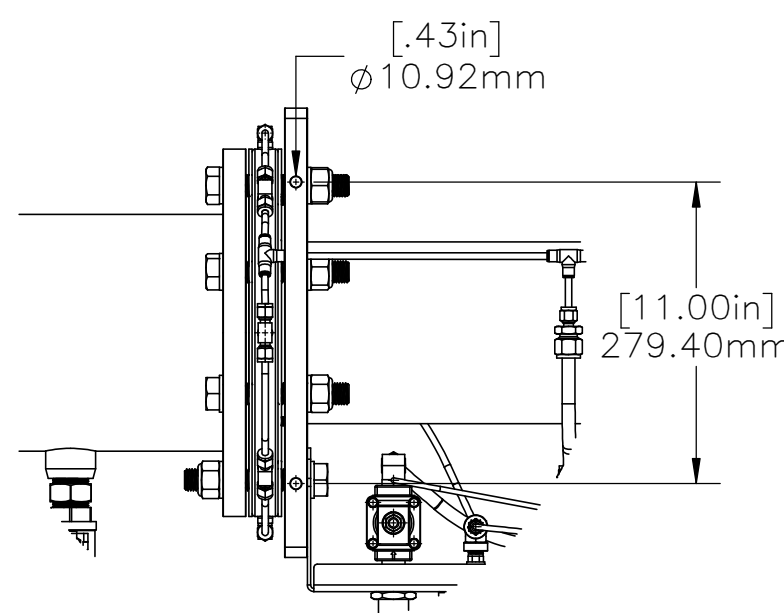
DRAWING NO:  
 50F1-800(WITH BUTTERFLY VALVE)  
 50F1-802(WITHOUT BUTTERFLY VALVE)

SIZE: **B**    SCALE: 1:10    SHEET: 1/2    REV: **A**

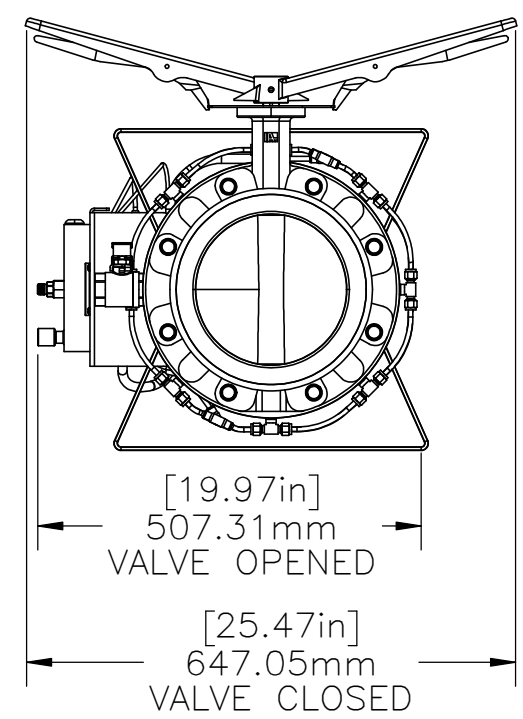
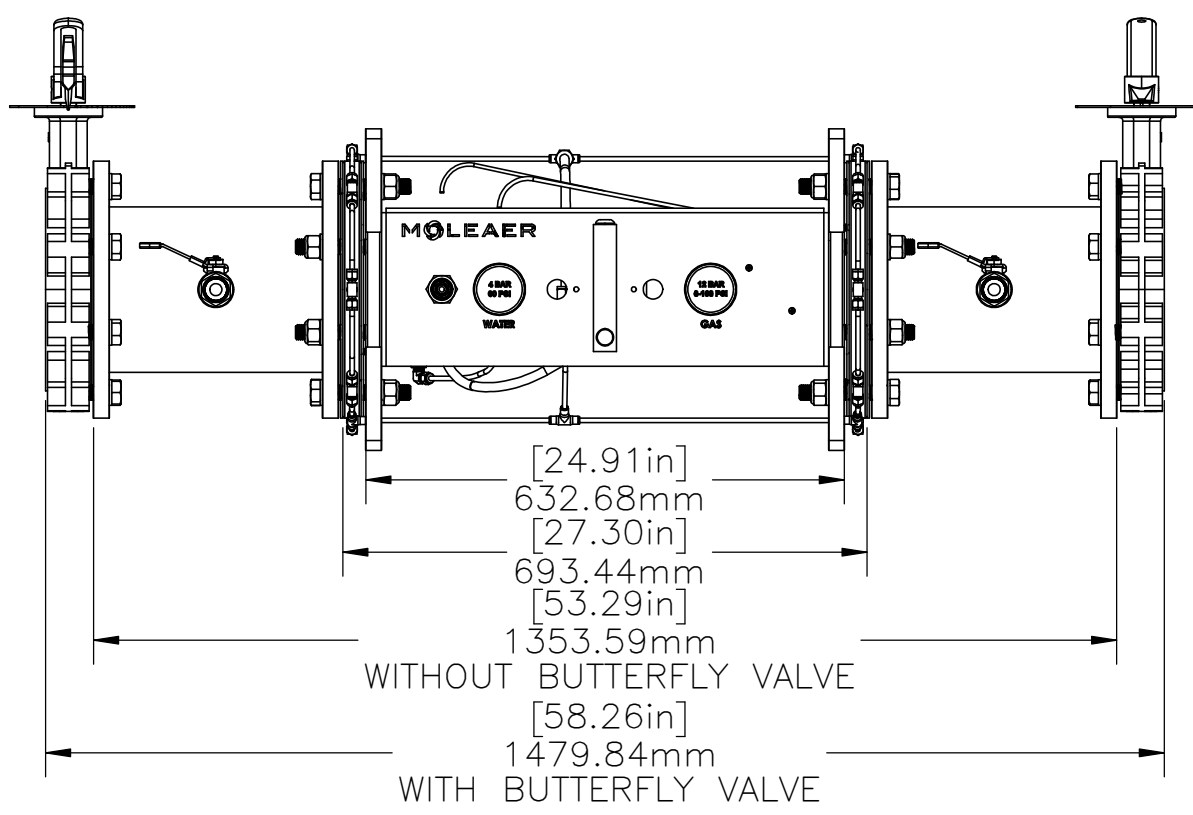
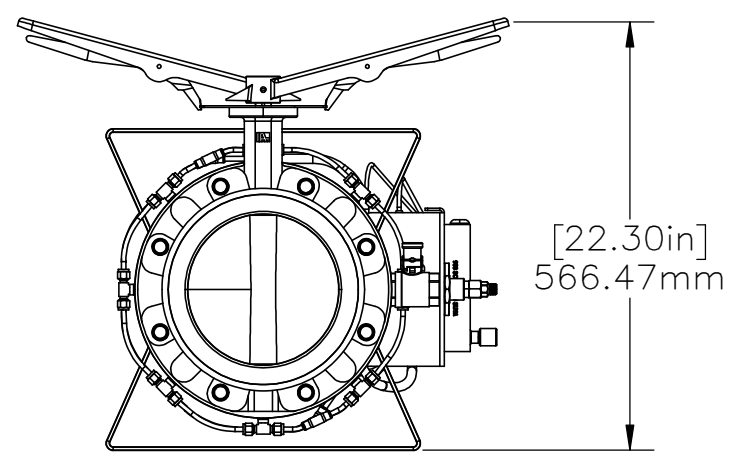
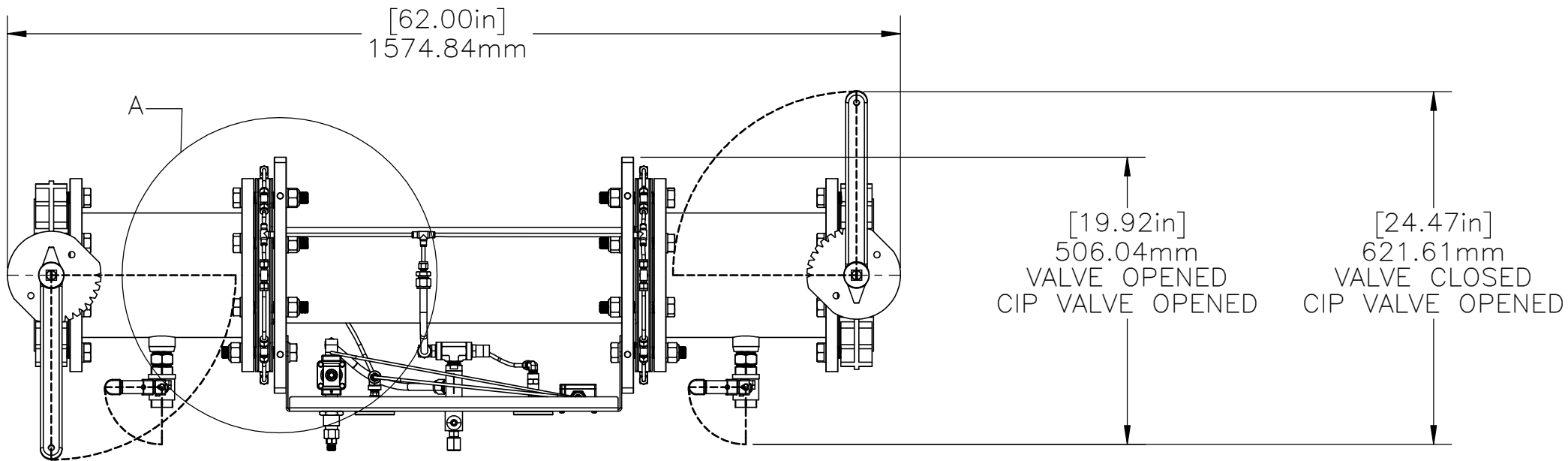
REV.	BY	DESCRIPTION	ECO	DATE	CHECKED	APPROVED
A	MC	INITIAL RELEASE	2025	09/07/23	PM	PM
REVISIONS						

8 7 6 5 4 3 2 1

F E D C B A



DETAIL A  
SCALE 1 : 7



REV.	BY	DESCRIPTION	ECO	DATE	CHECKED	APPROVED
A	MC	INITIAL RELEASE	2025	09/07/23	PM	PM
REVISIONS						

UNLESS OTHERWISE SPECIFIED: DIMENSIONS IN mm[INCHES] TOLERANCES ARE ±6.35[±0.250]	DRAWN BY M.CHA	DATE 09/07/23
	CHECKED BY P.MAHMOUDIAN	DATE 09/12/23
	APPROVED BY P.MAHMOUDIAN	DATE 09/12/23

**MOLEAER** 3232 W. EL SEGUNDO BLVD  
HAWTHORNE CA, 90250

DRAWING TITLE:  
**TRINITY L4, 316SS, METRIC, GAD**

DRAWING NO:  
50F1-800(WITH BUTTERFLY VALVE)  
50F1-802(WITHOUT BUTTERFLY VALVE)

SIZE: B SCALE: 1:10 SHEET: 2/2 REV: A

**PROPRIETARY AND CONFIDENTIAL**  
INFORMATION CONTAINED IN THIS DRAWING IS THE SOLE PROPERTY OF "MOLEAER INC". ANY REPRODUCTION IN PART OR WHOLE WITHOUT THE WRITTEN PERMISSION OF "MOLEAER INC" IS PROHIBITED.

8 7 6 5 4 3 2 1

A

A