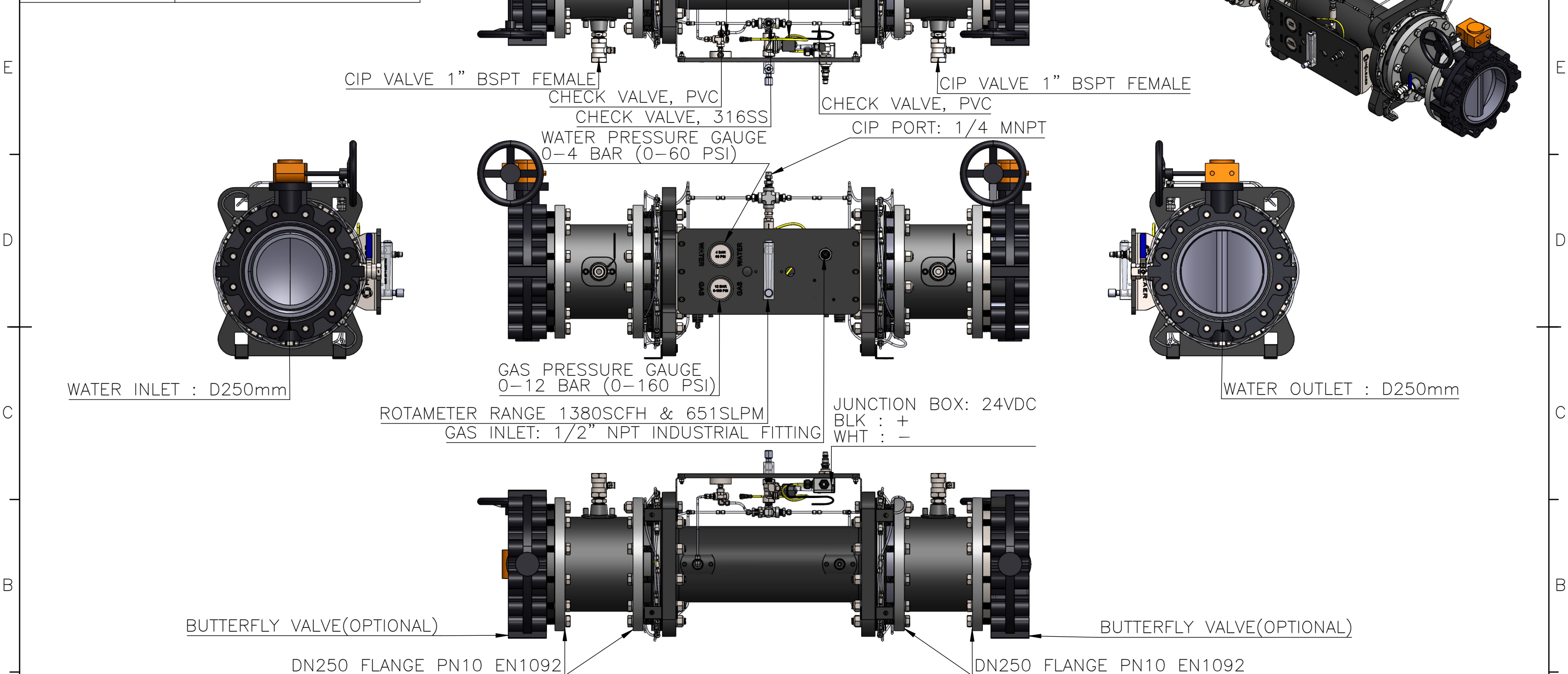


8 7 6 5 4 3 2 1

MATERIAL LIST	
MAIN COMPONENTS	MATERIAL
PIPES	HDPE
GAUGE	300 SERIES STAINLESS STEEL
GAS TUBING	PTFE
SOLENOID VALVE	316SS
CIP VALVE	316SS, PTFE
BUTTERFLY VALVE	PVC, FKM



REV.	BY	DESCRIPTION	ECO	DATE	CHECKED	APPROVED
C	EC	ADDED CHECK VALVES & CIP PORT	2069	02/28/24	MC	PM
B	MC	ADDED BUTTERFLY VALVE	2040	10/31/23	PM	PM
A	MC	INITIAL RELEASE	1377	07/27/23	CL	PM

UNLESS OTHERWISE SPECIFIED: DIMENSIONS IN INCHES[mm] TOLERANCES ARE ±0.250[±6.35]	DRAWN BY M.CHA CHECKED BY C.LAUGHLIN APPROVED BY P.MAHMOUDIAN	DATE 07/27/23 DATE 08/07/23 DATE 10/10/23
PROPRIETARY AND CONFIDENTIAL INFORMATION CONTAINED IN THIS DRAWING IS THE SOLE PROPERTY OF "MOLEAER INC". ANY REPRODUCTION IN PART OR WHOLE WITHOUT THE WRITTEN PERMISSION OF "MOLEAER INC" IS PROHIBITED.		

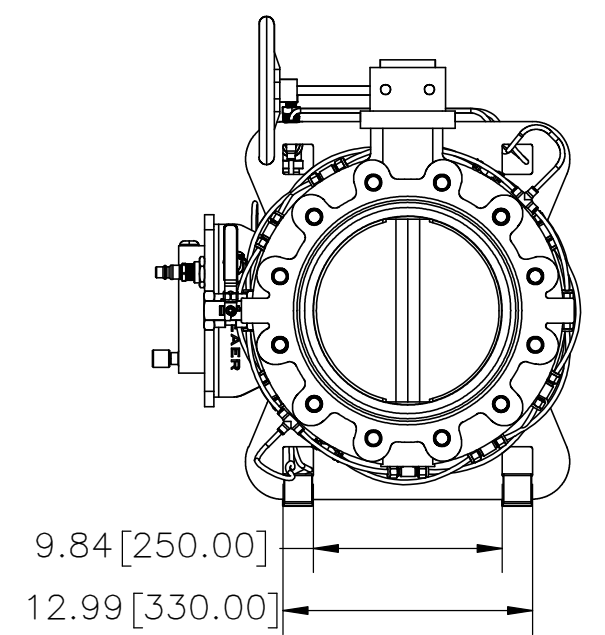
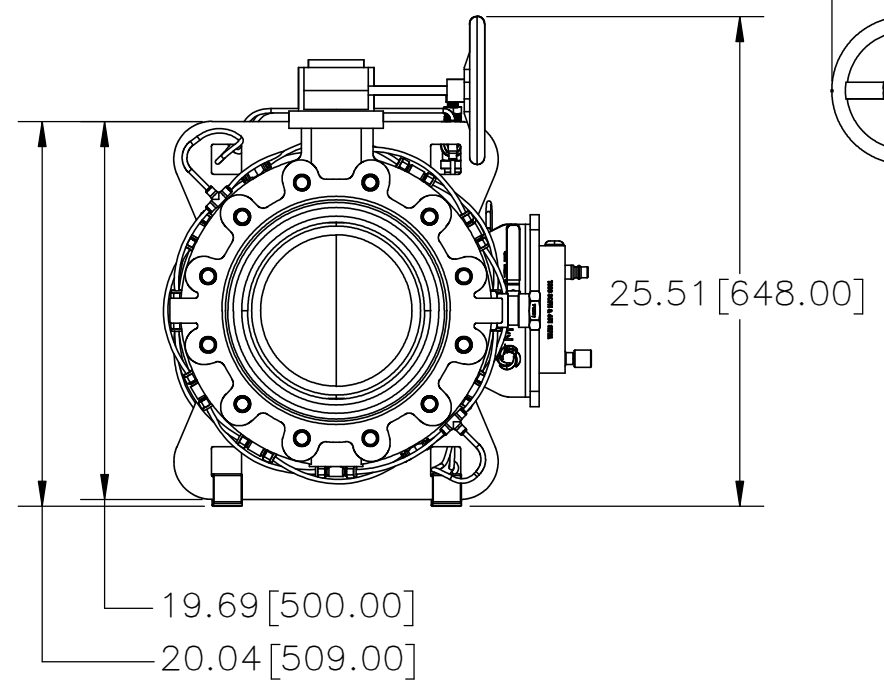
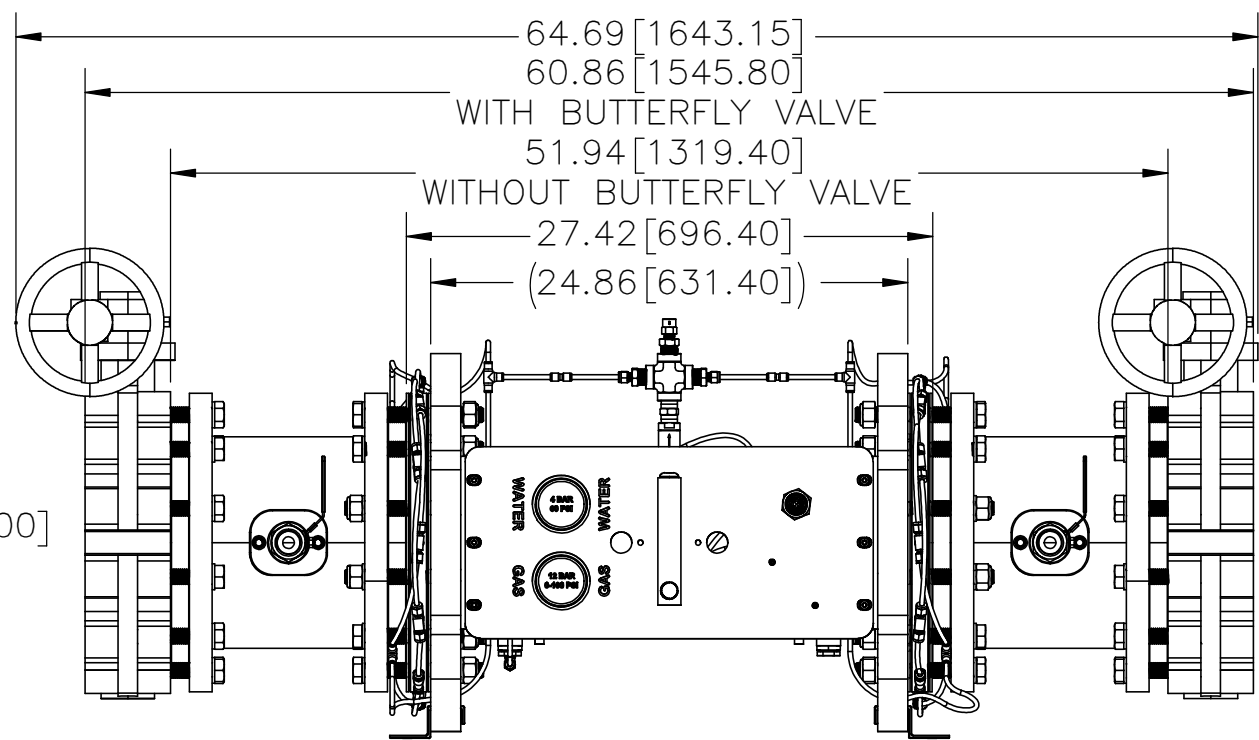
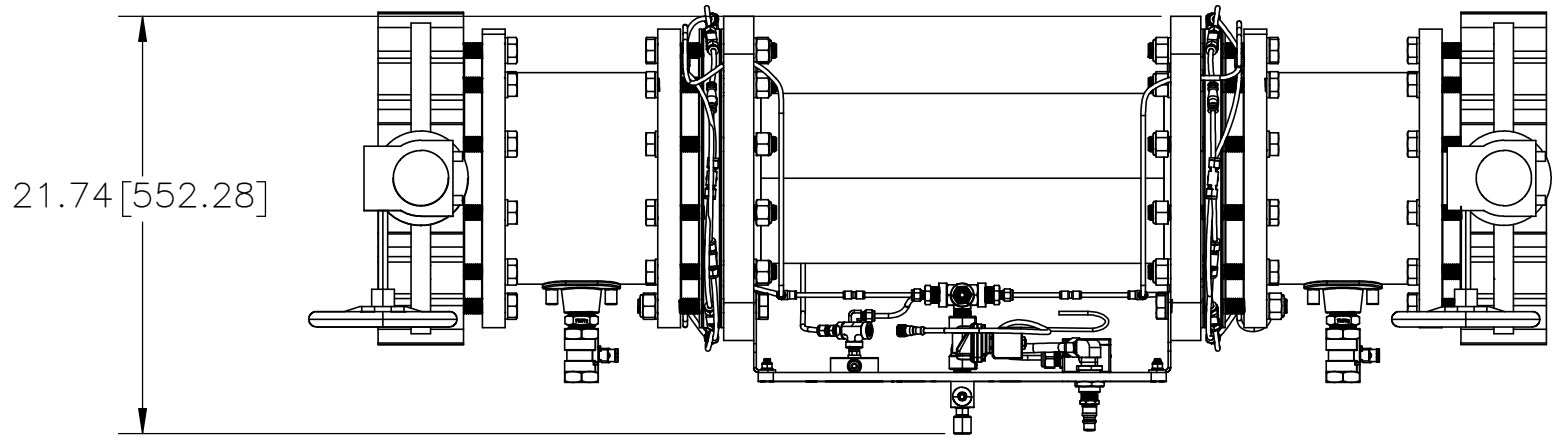
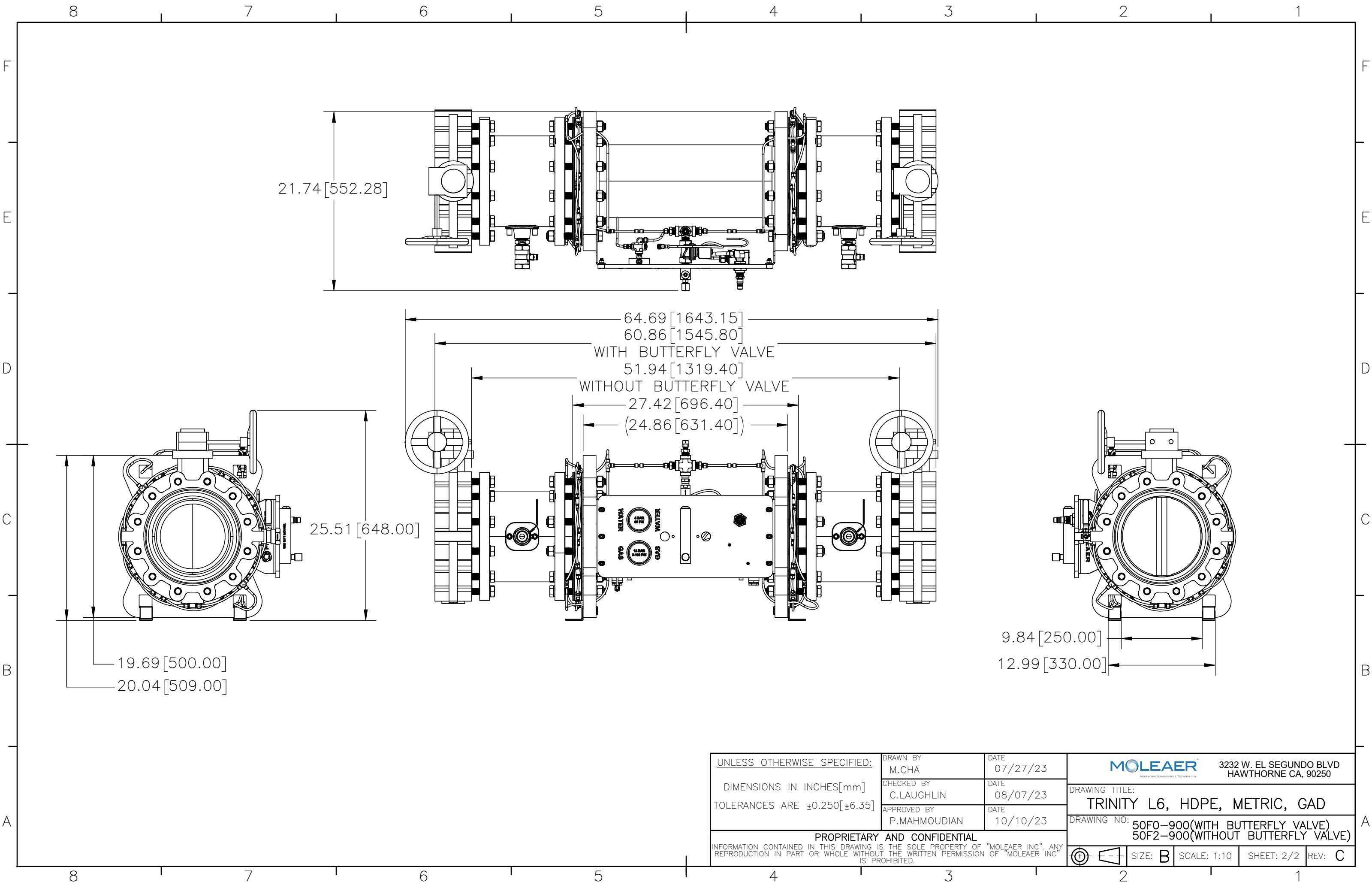
3232 W. EL SEGUNDO BLVD
 HAWTHORNE CA, 90250


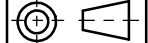
DRAWING TITLE:
TRINITY L6, HDPE, METRIC, GAD

DRAWING NO:
 50F0-900(WITH BUTTERFLY VALVE)
 50F2-900(WITHOUT BUTTERFLY VALVE)

SIZE: B SCALE: 1:10 SHEET: 1/2 REV: C

8 7 6 5 4 3 2 1



UNLESS OTHERWISE SPECIFIED: DIMENSIONS IN INCHES[mm] TOLERANCES ARE ±0.250[±6.35]	DRAWN BY M.CHA	DATE 07/27/23	 3232 W. EL SEGUNDO BLVD HAWTHORNE CA, 90250 DRAWING TITLE: TRINITY L6, HDPE, METRIC, GAD DRAWING NO: 50F0-900(WITH BUTTERFLY VALVE) 50F2-900(WITHOUT BUTTERFLY VALVE)
	CHECKED BY C.LAUGHLIN	DATE 08/07/23	
	APPROVED BY P.MAHMOUDIAN	DATE 10/10/23	
PROPRIETARY AND CONFIDENTIAL INFORMATION CONTAINED IN THIS DRAWING IS THE SOLE PROPERTY OF "MOLEAER INC". ANY REPRODUCTION IN PART OR WHOLE WITHOUT THE WRITTEN PERMISSION OF "MOLEAER INC" IS PROHIBITED.			 SIZE: B SCALE: 1:10 SHEET: 2/2 REV: C