

8 7 6 5 4 3 2 1

F

E

D

C

B

A

SYMBOL	DESCRIPTION
PMP	PUMP (WATER), 50 GPM @ 50 FT H ₂ O, 316SS/BUNA/TEFC
V1	SOLENOID VALVE, GAS, BRASS
V2	FLOW METER NEEDLE VALVE, ADJUST TO 2.5CFH/1.2LPM FOR OPTIMAL PERFORMANCE. SEE NOTE 2
FM	FLOW INDICATOR, GAS, 0-5CFH/0-2.4LPM
CV1-CV2	CHECK VALVE, GAS, 316SS/FKM
PS1	PRESSURE SWITCH, GAS, FACTORY SET @40PSI/2.75BAR,SS
PS2	PRESSURE SWITCH, WATER, @6-8 PSI/0.4-0.55 BAR,SS
PG1	PRESSURE GAUGE, GAS, 0-160PSI/0-12BAR, 316/304SS
PG2	PRESSURE GAUGE, WATER, 0-60PSI/0-4BAR, 316/304SS
DO	DO SENSOR, 0-40PPM, OPTICAL
	CUSTOMER POINT OF CONNECTION
	WATER LINE, GREY, SCH80, PVC (CPVC OPTIONAL)
	ELECTRICAL WIRING, REF. ELECTRICAL SCHEMATIC
	GAS TUBING, 1/4", CLEAR, PTFE
	WATER TUBING, 1/4", CLEAR, PTFE

- NOTES:
 1. WATER TEMPERATURE 40°F-140°F (4°C- 60°C)
 2. SEE MANUAL FOR GAS SUPPLY PRESSURE ADJUSTMENT INSTRUCTIONS.

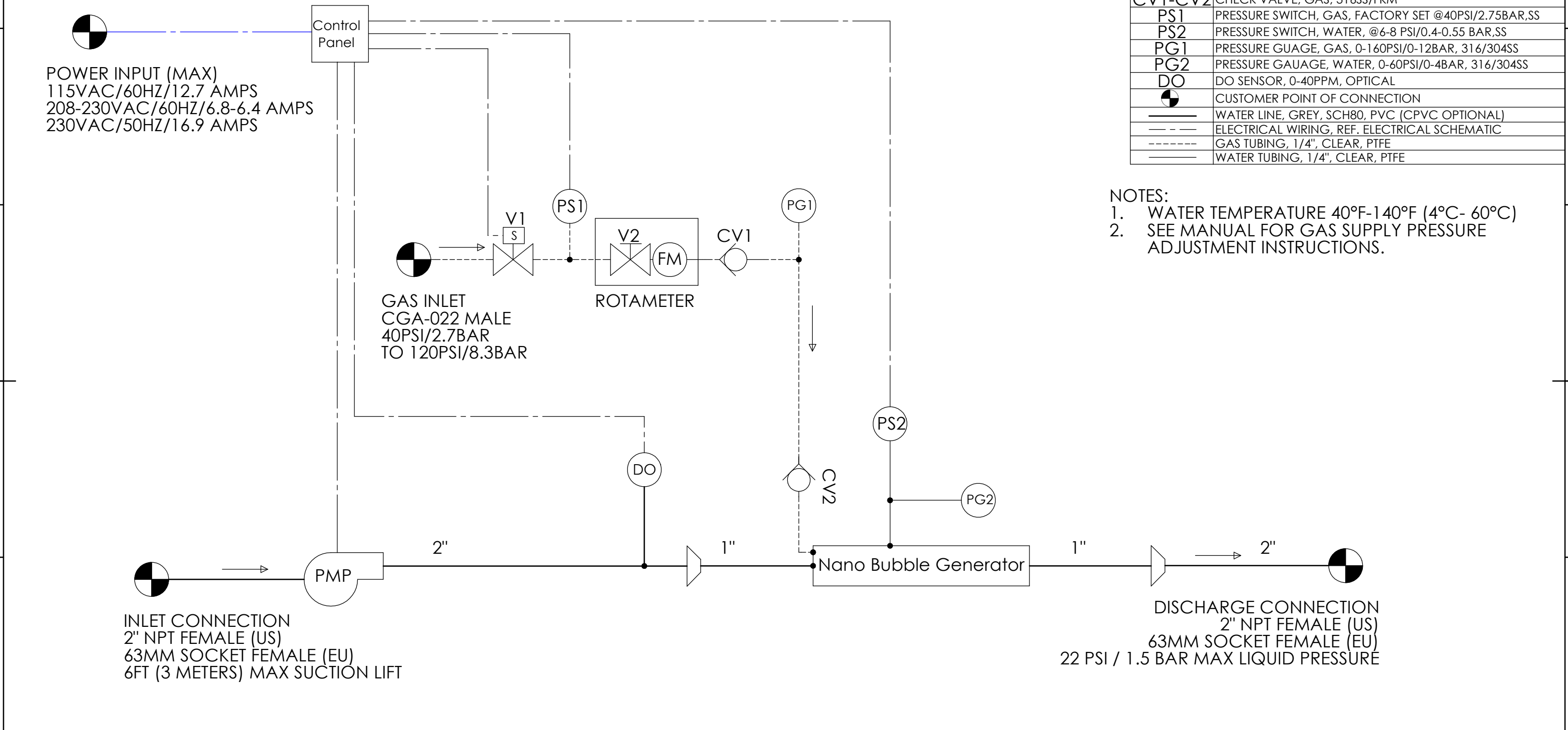
POWER INPUT (MAX)
 115VAC/60HZ/12.7 AMPS
 208-230VAC/60HZ/6.8-6.4 AMPS
 230VAC/50HZ/16.9 AMPS

Control Panel

GAS INLET
 CGA-022 MALE
 40PSI/2.7BAR
 TO 120PSI/8.3BAR

INLET CONNECTION
 2" NPT FEMALE (US)
 63MM SOCKET FEMALE (EU)
 6FT (3 METERS) MAX SUCTION LIFT

DISCHARGE CONNECTION
 2" NPT FEMALE (US)
 63MM SOCKET FEMALE (EU)
 22 PSI / 1.5 BAR MAX LIQUID PRESSURE



REV.	BY	DESCRIPTION	ECO	DATE	CHECKED	APPROVED
A	CL	ORIGINAL RELEASE	1154	11.6.2020	PM	PM
REVISIONS						
PROPRIETARY AND CONFIDENTIAL: INFORMATION CONTAINED IN THIS DRAWING IS THE SOLE PROPERTY OF "MOLEAER INC". ANY REPRODUCTION IN PART OR WHOLE WITHOUT THE WRITTEN PERMISSION OF "MOLEAER INC" IS PROHIBITED.						

DRAWN BY C. LAUGHLIN	DATE 02NOV2020	 20800 BELSHAW AVENUE CARSON CA, 90746
CHECKED BY PM	DATE 11.6.2020	
APPROVED BY PM	DATE 11.6.2020	
DIMENSIONS IN INCHES [mm]. ALL DIMENSIONS ARE ±.250 [±6.35] UNLESS OTHERWISE SPECIFIED		DRAWING TITLE: P&ID – BLOOM 1.5 50 US/EU
		DRAWING NO: 05F0-0XX
		SIZE: B SCALE: 1:1 SHEET: 1/1 REV: A

8 7 6 5 4 3 2 1